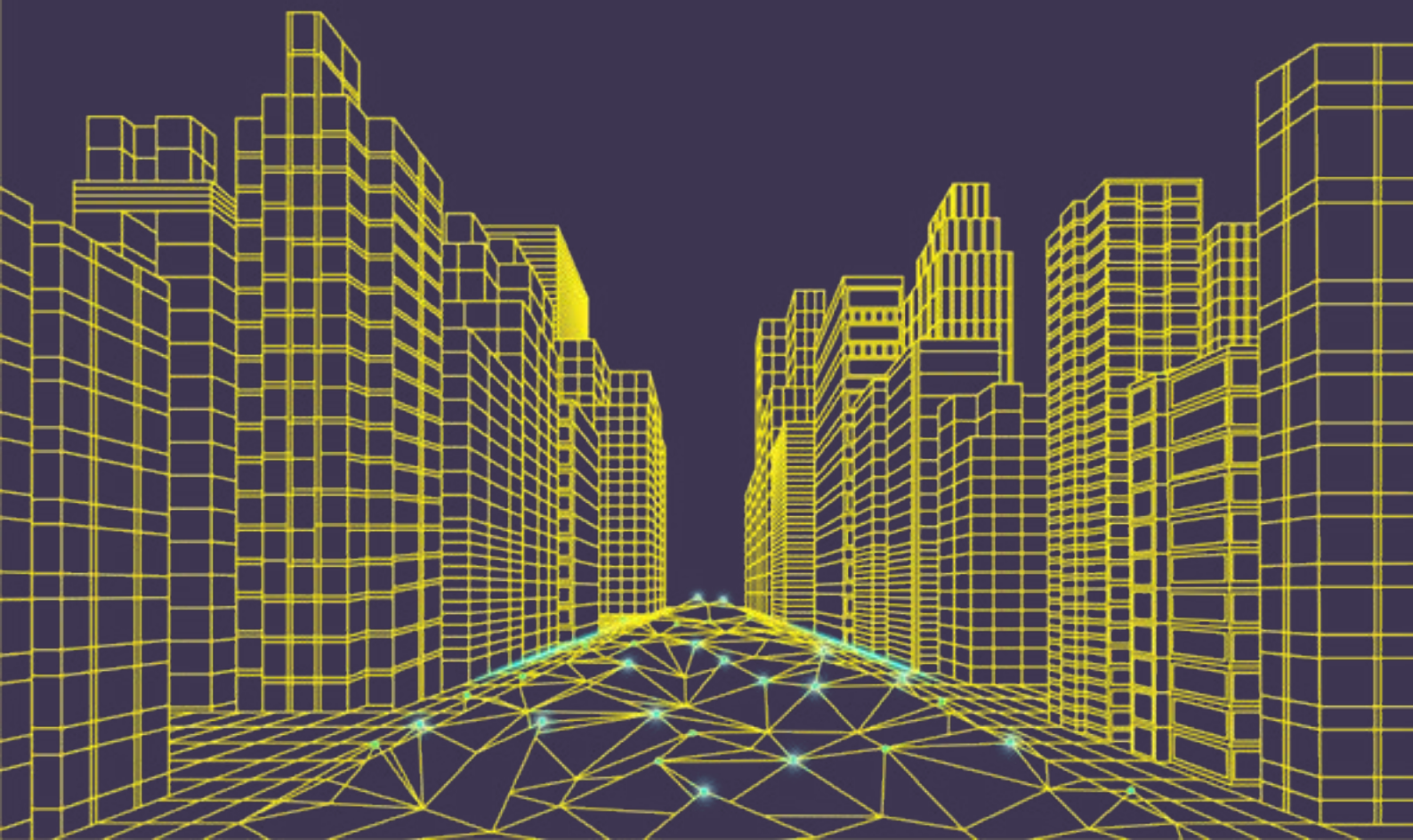




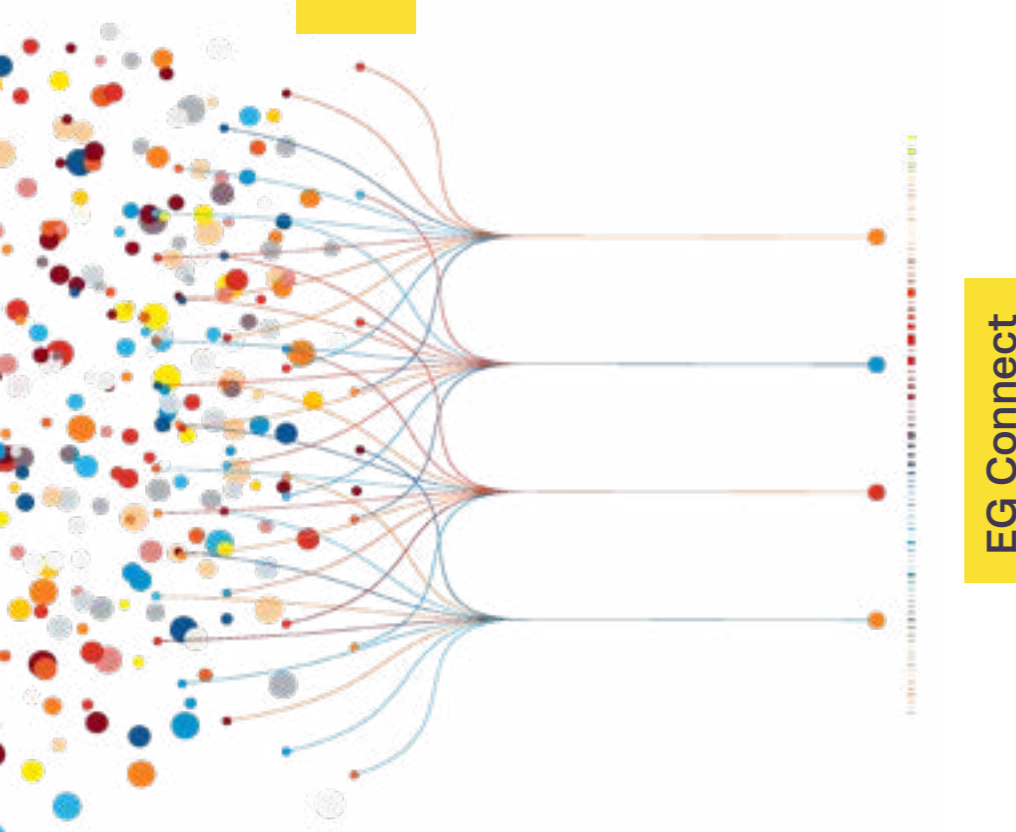
Connect

The most connected view of the CRE market

EG Connect is your gateway to a connected data-driven future in the real estate market



# Bridging the gap in real estate data



## Unlock the full potential of your data strategy with EG Connect

Imagine how connected datasets could revolutionise how organisations in real estate make decisions, opening doors to countless opportunities. But here's the catch – despite the immense possibilities, we're facing roadblocks.

Property data is like a hidden treasure, hard to find and scattered all over the place. Even when we manage to uncover some, it's often a puzzle – messy and hard to understand. It's like having a powerful tool but not being able to use it effectively. Now, imagine a solution stepping in to change this narrative.

At EG, we're not just in the business of data; we're data experts, constantly seeking new ways to seamlessly connect data and meet the unique needs of the commercial real estate industry by complimenting our customers in their human advisory businesses. We are excited to unleash our latest product offering: **EG Connect** – a game-changer in the world of real estate data. It brings order to the chaos, making data accessible and structured.

This powerful tool grants you instant access to seamlessly interconnected datasets sourced from various corners of the real estate market. Data is automatically connected and delivered through a variety of APIs and files, ensuring a tailored experience for your unique needs. Explore a dynamic suite of connections, featuring EG's building IDs, UPRNs, title IDs, and company IDs. Advanced address matching and company matching APIs further enables you to standardise and connect your proprietary data to addresses, buildings, companies and more. Additionally, EG has partnered with Dataline Labs, a no-code platform designed to streamline data processes for CRE professionals without large technology teams.

With EG Connect, we're turning the page on the challenges, unlocking the true potential of property data for smarter, more informed decision-making in real estate.

### Key benefits

**1 Unlock hidden insights and create immediate value**

EG Connect standardises and connects datasets across buildings, owners, companies and locations.

**2 Access the data you need with ease and where you need it**

EG Connect makes previously hard to acquire datasets, such as deals and tenancies, available via APIs and files, for integration into your own systems.

**3 Because we are the data experts**

EG Connect delivers clean, accurate data, dealing with duplicates and difficulties so you can focus on the things that matter.

# Property data isn't being leveraged effectively, but why?

## It isn't readily available

- Key information such as tenancy and building specifications are locked away on private databases and within siloed documents.
- Leases of less than 7 years are not available via HM Land Registry.

## It is unstructured and fragmented

- Free-text information and lack of standardisation makes property data difficult to analyse.
- Deep expertise is required to accurately connect data across buildings, owners, companies and locations.



EG Connect provides instant access (via files and APIs) to connected datasets from across the real estate market. Data is standardised and connected across a growing suite of ID's, including EG's building IDs, UPRNs, title IDs and company IDs, and company matching APIs.

## Data catalogue

### Deals (lettings & sales)

More than **900,000\*** occupational and investment transactions, representing some **80%** of the market, sourced via contributions, HM Land Registry and research.

### Availabilities

More than **85,000\*** live availabilities across the UK commercial real estate market, sourced via contributions, advanced scraping methods and an expert team of researchers.

### Buildings

Energy performance certificates and display energy certificates across England and Wales. Access ratings, recommendations and more.

### Ownership

The most comprehensive source of property ownership across England and Wales, derived from sources including HM Land Registry, Companies House and the Charities Commission.

### More datasets coming soon

- Tenancy schedules
- Planning
- VOA

## Matching solutions

### Connect your own and client data

#### Match API solutions:

- Address matching
- Company matching



# See the whole picture, not just a single piece

“ EG Connect takes individual pieces of data and connects them to create a whole view.

Why spend time and money individually building a view, dataset by dataset, when EG Connect can deliver the whole thing, ready built, cleansed and perfectly prepared.

Sean Norris, Managing Director EG



Born from first hand challenges working with CRE data, EG Connect addresses the challenges associated with siloed identifiers, such as UPRNs. The result is an instantly connected, accurate and comprehensive view of buildings, companies, titles and locations.

## Example

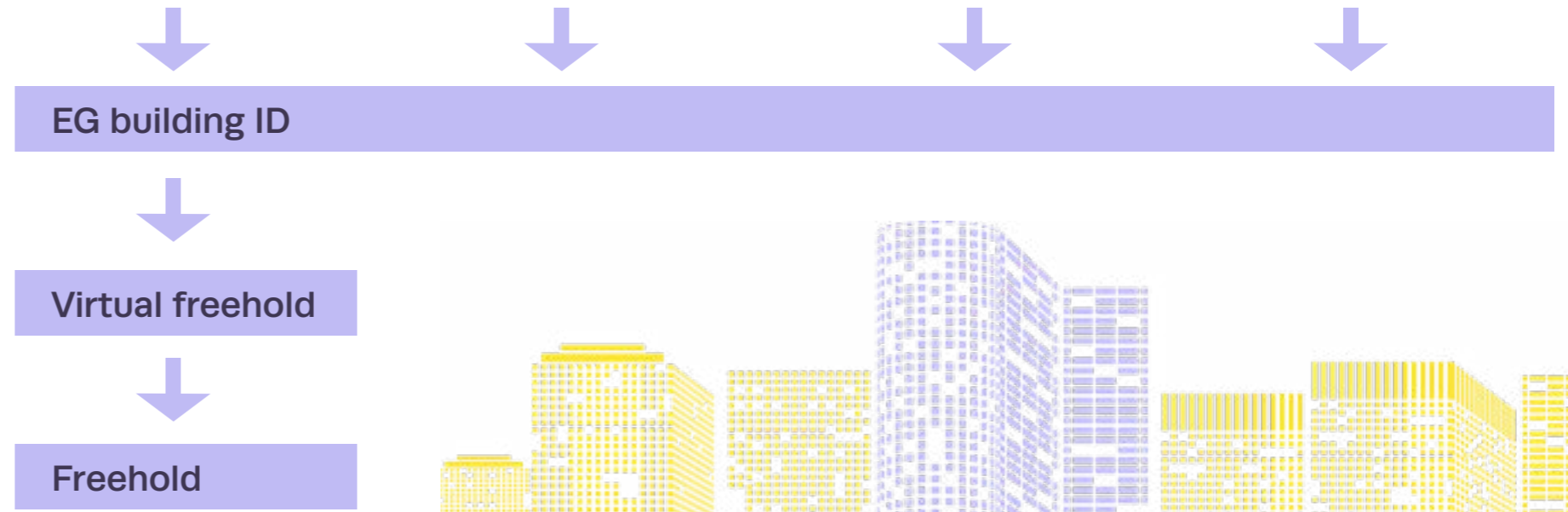
**UPRN**  
45 Old Broad Street  
0 Registered titles

**EG Connect**  
45 Old Broad Street  
2 registered leaseholds

99 Bishopsgate  
38 registered leaseholds

99-101 Bishopsgate  
0 registered leaseholds

101 Bishopsgate  
0 registered leaseholds





# Making data work for you

## Stand out from the competition and grow revenues

Create the best view of the CRE market; enabling differentiated, client-winning advisory services.

- 1 EG's data as a service allows your technology teams to instantly create applications, that enable your teams to **deliver client-winning pitches** and leading advisory solutions.
- 2 Access the property data you need to **streamline workflows** and create **cost-saving efficiencies**. Without the need to spend hours collecting and validating property data, your team of researchers and surveyors can instantly put together differentiated pitches, **provide leading advisory services and complete more deals, faster**.
- 3 Leverage data from across the UK to reach new markets and introduce new service lines, broadening your advisory services to **unlock new growth**.

Instantly connected property data that empowers your organisation to develop cutting-edge technology solutions, supporting your teams in delivering differentiated, client-winning advisory services.

## What is unique about EG?

### A strong heritage

A trusted partner to the CRE market for over 165 years, with a strong network of partners that gives us access to data from across the industry.

### Data matching

The preparation of data is instantly taken care of. All datasets are unified across a set of standardised identifiers, such as EG's Building IDs.

### Unlock the power of your internal data

Leverage address matching and company matching APIs that allow you to instantly connect your own portfolio and market data alongside EG's data and wider market data.

### Unfiltered access

Hard to capture datasets, such as EG's news, deals, listings, tenancy and building data are all available to integrate into your technology applications.

### Delivering the data you need in the format that you need

Access data from across the market in APIs and files that can be integrated directly into your solutions.

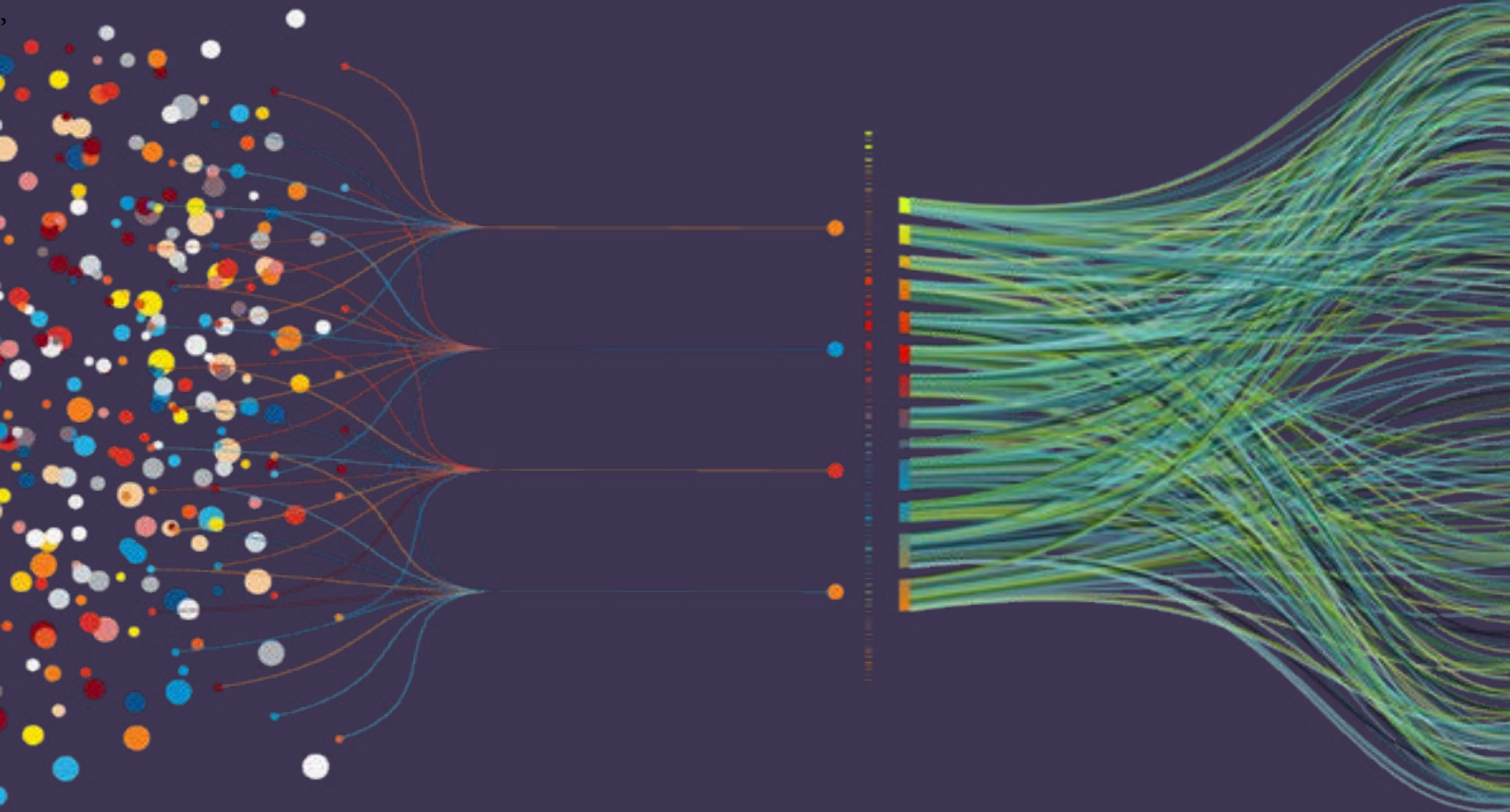


# Imagine what your organisation could do with instant access to accurate and comprehensive building, market, ownership and company data

## Some of the potential applications

- 1 Combine EG's data, market data and your companies' data**  
Build a searchable database of real estate landlords, tenants and their related property interests. Equip your occupational, capital markets, development and professional teams with the information they need to demonstrate their expertise and win more business.
- 2 Provide Business Rates teams with ready made files**  
Or integrate data directly into systems that provide the building and market information required to instantly advise clients on how to reduce business rates; resulting in the winning of more instructions.
- 3 Create automated valuation report solutions**  
Allow your Valuation team to dramatically reduce the time it takes to complete valuations. The result is less time focussed on capturing data and more time doing deals and providing clients with differentiated advice.
- 4 Develop asset management and corporate occupiers analytics, dashboard and database solutions**  
Detail your clients' portfolios in-line with market activity. Win more clients and maximise fees by having data to maximise rental income, proactively fill voids, keep on top of lease events and deliver expert strategic counsel. Do the same for corporate occupiers by advising your clients across acquisitions, lease negotiations and disposal decisions.





The most connected view of the CRE market

# Unlock EG Connect: A game-changer in the world of real estate data.

eg.co.uk

Let's talk about what EG can do for you and your business.

Call us: 020 7911 1766  
Book a demo: [support@eg.co.uk](mailto:support@eg.co.uk)



Your trusted source of data and intelligence in the commercial real estate industry. EG™ is part of LexisNexis® Risk Solutions, a RELX business. Copyright © 2024 LexisNexis Risk Solutions.